

**Biatain**<sup>®</sup>

Ibu



I can't believe  
in simple  
wound care  
solutions



Biatain<sup>®</sup> – the simple choice

# Biatain® Ibu

– superior absorption for painful wounds

## Features

- Superior absorption and exudate management<sup>2</sup>
- Soft & conformable foam<sup>3</sup>
- Combines moist wound healing with local release of ibuprofen<sup>1</sup>

## Benefits

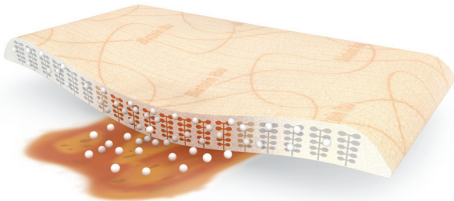
- Minimal maceration and leakage<sup>1</sup>
- High patient comfort<sup>3</sup>
- In addition to moist wound healing, Biatain Ibu may reduce wound pain during wear time and at dressing change

Wound healing does not have to be painful<sup>4-5</sup>

Superior absorption - faster healing

## Description

Biatain® Ibu is a soft and flexible absorbent foam dressing. Biatain Ibu is the first and only dressing ever to combine moist wound healing with local release of ibuprofen.<sup>1</sup>



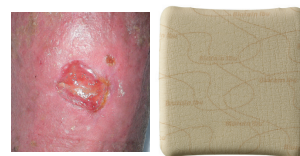
- Absorbent polyurethane foam dressing with bevelled edges on the non-adhesive dressing
- Unique 3D foam structure that conforms closely to the wound bed for superior absorption – also under compression
- Contains 0.5 mg/cm<sup>2</sup> of ibuprofen homogeneously dispersed throughout the foam matrix\*
- In the presence of exudate, there is a sustained release of a low dose of ibuprofen into the wound bed throughout the wear time of the dressing (up to 7 days).<sup>1</sup>

## Usage

Biatain Ibu can be used for a wide range of exuding wounds, including leg ulcers, pressure ulcers, second-degree burns, postoperative wounds, skin abrasion and non-infected diabetic foot ulcers. Biatain Ibu Non-Adhesive can also be used on donor sites.

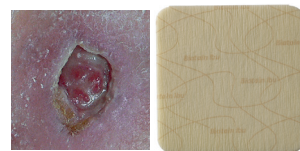
Biatain Ibu is suitable for use in combination with compression therapy.

## Biatain® Ibu products



### Biatain Ibu Non-Adhesive

– superior absorption for painful wounds



### Biatain Ibu Soft-Hold

– superior absorption for painful wounds that are difficult to bandage

### Biatain Ibu Non-Adhesive



Size (cm)	Qty	Code	NHS	PIP
5x7	5	4105	ELA408	346-6430
10x12	5	4152	ELA320	327-0436
10x22.5	5	4158	ELA304	327-0451
15x15	5	4155	ELA322	327-0444
20x20	5	4120	ELA403	346-6422

### Biatain Ibu Soft-Hold



Size (cm)	Qty	Code	NHS	PIP
10x12	5	4162	ELA332	327-0469
10x22.5	5	4168	ELA302	327-0485
15x15	5	4165	ELA331	327-0477

\* One dressing (10 x 12 cm) contains 60 mg of ibuprofen which is continuously released for up to 7 days<sup>1</sup>, in proportion to the level of exudate. For comparison, the maximum daily oral dose of ibuprofen is 1200 mg and in special cases 3200 mg<sup>6</sup> for treatment of severe pain

Reference: 1. Jørgensen et al. Wound repair and regeneration 2006;14(3): 233-39 2. Thomas et al. www.dressings.org/TechnicalPublications/PDF/Coloplast-Dressings-Testing-2003-2004.pdf 3. Vogensen. British Journal of Nursing 2006;15(21):1162-65. 4. Gottrup et al. Wound Repair and Regeneration 2008;6:615-25 5. Palao I Domenech et al. Journal of Wound Care 2008;17(8):342-48 6. DrugPoints® Ibuprofen. MICROMEDEX® www.smi.dk. 2006, Vol. 12



Ostomy Care  
Urology & Continence Care  
Wound & Skin Care



Coloplast develops products and services that make life easier for people with very personal and private medical conditions. Working closely with the people who use our products, we create solutions that are sensitive to their special needs. We call this intimate healthcare. Our business includes ostomy care, urology and continence care and wound and skin care. We operate globally and employ more than 7,000 people.

Coloplast Ltd  
Nene Hall  
Peterborough Business Park  
Peterborough  
PE2 6FX

The Coloplast logo is a registered trademark of Coloplast A/S. © 2012-01.  
All rights reserved Coloplast A/S, 3050 Humlebæk, Denmark.

CM639N

www.coloplast.co.uk/woundandskincare