

**Biatain®**



I don't believe  
in simple  
wound care  
solutions



Biatain® – the simple choice

# Biatain®

– superior absorption - faster healing

## Features

- Superior absorption and exudate management<sup>1-3</sup>
- Soft & conformable foam<sup>4,5</sup>
- Long wear time<sup>1</sup>

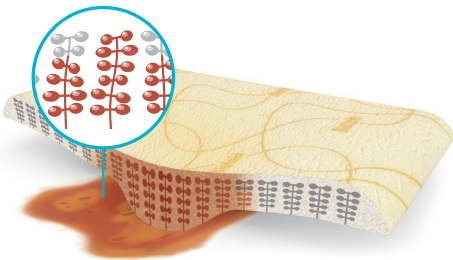
## Benefits

- Minimal maceration and leakage<sup>1</sup>
- High patient comfort<sup>5</sup>
- Cost-effective<sup>6</sup>

Superior absorption  
- faster healing

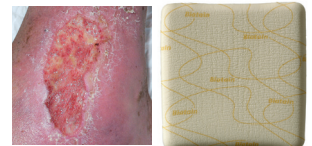
## Description

Biatain® is a soft and conformable foam dressing that effectively absorbs and retains wound exudate.<sup>1,2</sup> This ensures a moisture balance that is optimal for healing of exuding wounds.<sup>7,8</sup>



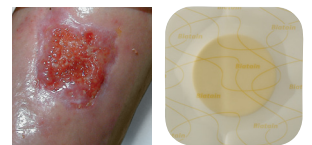
- Absorbent polyurethane foam dressing with bevelled edges
- Soft and flexible
- Unique 3D foam structure that conforms closely to the wound bed for superior absorption – also under compression
- Wear time up to 7 days

## Biatain dressings



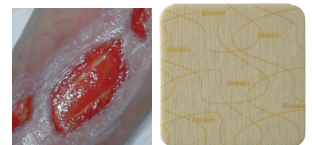
### Biatain® Non-Adhesive

– superior absorption for wounds with extra fragile skin



### Biatain® Adhesive

– superior absorption for wounds that need extra adhesion



### Biatain® Soft-Hold

– superior absorption for wounds that are difficult to bandage

## Usage

Biatain can be used for a wide range of exuding wounds such as leg ulcers, pressure ulcers, second-degree burns, postoperative wounds and skin abrasions. Biatain Non-Adhesive can also be used for non-infected diabetic foot ulcers. Biatain Non-Adhesive and Adhesive can also be used for donor sites. Biatain can be used in combination with compression therapy.

### Biatain Non-Adhesive



| Size (cm) | Qty | Code | NHS    | PIP      |
|-----------|-----|------|--------|----------|
| 5x7       | 10  | 6105 | ELA414 | 339-6355 |
| 10x10     | 10  | 3410 | ELA039 | 265-3228 |
| 10x20     | 5   | 3412 | ELA260 | 315-7674 |
| 15x15     | 5   | 3413 | ELA041 | 265-3236 |
| 20x20     | 5   | 3416 | ELA047 | 276-2456 |

### Biatain Adhesive



| Size (cm)        | Qty | Code | NHS    | PIP      |
|------------------|-----|------|--------|----------|
| 7.5x7.5          | 10  | 3462 | ELA634 | 379-3965 |
| 10x10            | 10  | 3430 | ELA074 | 285-7027 |
| 12.5x12.5        | 10  | 3420 | ELA044 | 347-2040 |
| 15x15            | 5   | 3421 | ELA635 | 379-3973 |
| 18x18            | 5   | 3423 | ELA045 | 259-6211 |
| 18x28            | 10  | 3426 | ELA259 | 315-7666 |
| 17 round contour | 5   | 3486 | ELA209 | 304-5721 |
| 17x17 sacral     | 5   | 3483 | ELA636 | 379-3833 |
| 23x23 sacral     | 5   | 3485 | ELA050 | 281-6684 |
| 19x20 heel       | 5   | 3488 | ELA051 | 281-6692 |

### Biatain Soft-Hold



| Size (cm) | Qty | Code | NHS    | PIP      |
|-----------|-----|------|--------|----------|
| 5x7       | 5   | 3473 | ELA404 | 346-6059 |
| 10x10     | 5   | 3470 | ELA274 | 320-0151 |
| 10x20     | 5   | 3472 | ELA275 | 320-0169 |
| 15x15     | 5   | 3475 | ELA276 | 320-0177 |

**References:** 1. Andersen et al. Ostomy/Wound Management 2002;(48)8:34-41 2. Thomas et al. www.dressings.org/TechnicalPublications/PDF/Coloplast-Dressings-Testing-2003-2004.pdf 3. Reitzel et al. EWMA 2008 4. Jørgensen et al. EWMA 2008 5. Vogensen. British Journal of Nursing 2006;15(21):1162-65 6. Bale et al. EWMA 2002 7. White R and Cutting KF. Modern exudate management: a review of wound treatments. WorldWideWounds 2006. 8. Romanelli et al. Exudate management made easy. Wounds International 2010;1(2).



Ostomy Care  
Urology & Continence Care  
Wound & Skin Care



Coloplast develops products and services that make life easier for people with very personal and private medical conditions. Working closely with the people who use our products, we create solutions that are sensitive to their special needs. We call this intimate healthcare. Our business includes ostomy care, urology and continence care and wound and skin care. We operate globally and employ more than 7,000 people.

Coloplast Ltd  
Nene Hall  
Peterborough Business Park  
Peterborough  
PE2 6FX

The Coloplast logo is a registered trademark of Coloplast A/S. © 2013-04.  
All rights reserved Coloplast A/S, 3050 Humlebæk, Denmark.

CM640N

www.coloplast.co.uk/woundandskinicare