

Biatain® – superior absorption - faster healing

An all-in-one wound care portfolio does not exist



Biatain® – the simple choice

References: 1. Falanga. Classifications for wound bed preparation and stimulation of chronic wounds. *Wound Repair and Regeneration* 2000;8(5):347-52 2. Enoch & Harding. Wound Bed Preparation: The science behind the removal of barriers to healing. *Wounds: A Compendium of Clinical Research and Practice* 2003;15(7): 213-229 3. European Wound Management Association (EWMA). Position Document: Wound Bed Preparation in Practice. London: MEP Ltd, 2004 4. World Union of Wound Healing Societies (WUWHS). Principles of best practice: Wound exudate and the role of dressings. A consensus document. London: MEP Ltd, 2007 5. Romanelli et al. Exudate management made easy. *Wounds International* 2010;1(2) 6. Andersen et al. Ostomy/ Wound Management 2002;4(8):34-41 7. Nielsen et al. In vitro test of three foam dressings with silicone adhesive: Fluid handling capacity with and without compression. Poster, EWMA 2011 8. Jørgensen et al. *International Wound Journal* 2005;2(1):64-73 9. Münster et al. *Journal of Wound Care*. 2006;15(5):199-206 10. Jørgensen et al. *Wound repair and regeneration* 2006;14(3): 233-39.



Coloplast Ltd
Nene Hall
Peterborough Business Park
Peterborough
PE2 6FX

Coloplast develops products and services that make life easier for people with very personal and private medical conditions. Working closely with the people who use our products, we create solutions that are sensitive to their special needs. We call this intimate healthcare. Our business includes ostomy care, urology and continence care and wound and skin care. We operate globally and employ more than 7,000 people. The Coloplast logo is a registered trademark of Coloplast A/S. © 2013-4. All rights reserved Coloplast A/S, 3050 Humlebæk, Denmark. www.coloplast.co.uk/woundandskincare

Biatain® Silicone

Superior absorption – for painful wounds that are difficult to bandage

Biatain® Ibu Soft-Hold

Superior absorption – for painful wounds that are difficult to bandage

Biatain® Ibu Non-Adhesive

Superior absorption – for painful wounds

Biatain® Ag Adhesive

Superior absorption – for infected wounds that need extra adhesion

Biatain® Ag Non-Adhesive

Superior absorption – for infected wounds with extra fragile skin

- Absorbent polyurethane foam dressing with bevelled edges
- Soft and flexible
- Unique 3D foam structure that conforms closely to the wound bed for superior absorption and continuous release of silver to the wound
- Proven to help wounds with local infection heal faster^{8,9}

Usage

Biatain Ag Non-Adhesive can be used for a wide range of exuding wounds with delayed healing due to bacteria, or where there is a risk of infection, including leg ulcers, pressure ulcers, diabetic foot ulcers, second-degree burns, donor sites, postoperative wounds and skin abrasions.



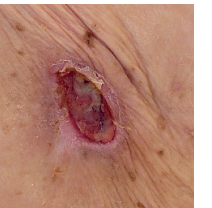
Biatain Ag Non-Adhesive can be used in combination with compression therapy.



Size (cm)	Qty	Code	NHS	PIP
5x7	5	5105	ELA415	339-6363
5x8 cavity	5	9628	ELA162	299-6528
10x10	5	9622	ELA163	297-6736
10x20	5	9623	-	314-2767
15x15	5	9625	ELA161	297-6744
20x20	5	9626	-	314-2775

Usage

Biatain Ag Adhesive can be used for a wide range of exuding wounds with delayed healing due to bacteria, or where there is a risk of infection, including leg ulcers, pressure ulcers, second-degree burns, donor sites, postoperative wounds and skin abrasions.



Biatain Ag Adhesive can be used in combination with compression therapy.



Size (cm)	Qty	Code	NHS	PIP
12.5x12.5	5	9632	ELA164	297-6751
18x18	5	9635	ELA165	297-6769
23x23 Sacral	5	9641	ELA221	313-1398
19x20 Heel	5	9643	ELA220	313-1406

Usage

Biatain Ibu Non-Adhesive can be used for a wide range of exuding wounds, including leg ulcers, pressure ulcers, second-degree burns, donor sites, postoperative wounds, skin abrasion and non-infected diabetic foot ulcers.



Biatain Ibu Non-Adhesive provides moist wound healing and may reduce wound pain caused by tissue damage.

Biatain Ibu Non-Adhesive is suitable for use in combination with compression therapy.



Size (cm)	Qty	Code	NHS	PIP
5x7	5	4105	ELA408	346-6430
10x12	5	4152	ELA320	327-0436
10x22.5	5	4158	ELA304	327-0451
15x15	5	4155	ELA322	327-0444
20x20	5	4120	ELA403	346-6422

Usage

Biatain Ibu Soft-Hold can be used for a wide range of exuding wounds, including leg ulcers, pressure ulcers, second-degree burns, post-operative wounds, skin abrasion and non-infected diabetic foot ulcers.



Biatain Ibu Soft-Hold provides moist wound healing and may reduce wound pain caused by tissue damage.

Biatain Ibu Soft-Hold is suitable for use in combination with compression therapy.



Size (cm)	Qty	Code	NHS	PIP
10x12	5	4162	ELA332	327-0469
10x22.5	5	4168	ELA302	327-0485
15x15	5	4165	ELA331	327-0477

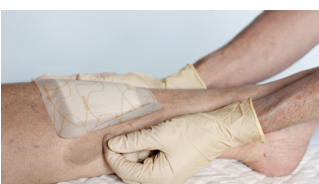
Remove Biatain Silicone foam dressings aseptically from the packaging. Do not touch the plain (non-printed) side of the foam.



Use the handles to prevent touching the dressing and to ensure aseptic application.



Remove the centre protective film first and place the foam part of the dressing over the wound. Then remove the release films on the sides as part of the dressing application.



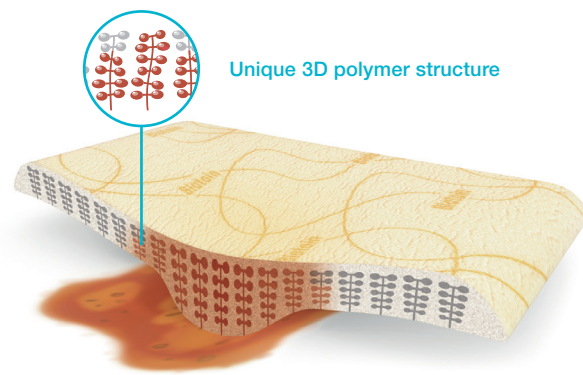
Biatain Silicone foam dressing should be changed when clinically indicated or when visible signs of exudate approach the edge of the dressing. The dressing should not be left in place for more than 7 days without clinical inspection by a physician.



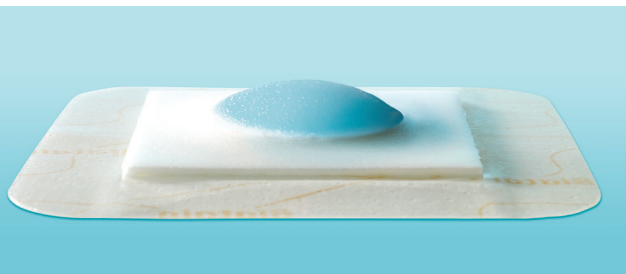
Superior absorption

After 30 years in wound care, we at Coloplast believe that absorption is the key to better healing. Our Biatain® portfolio brings superior absorption to daily wound care needs, making Biatain the simple choice for faster healing.

Exudate management
Choosing a dressing with superior absorption and exudate management capabilities can reduce leakage, skin maceration, risk of infection and help achieve an optimal moist wound-healing environment.¹⁻⁵ This is where Biatain excels.^{6,7}

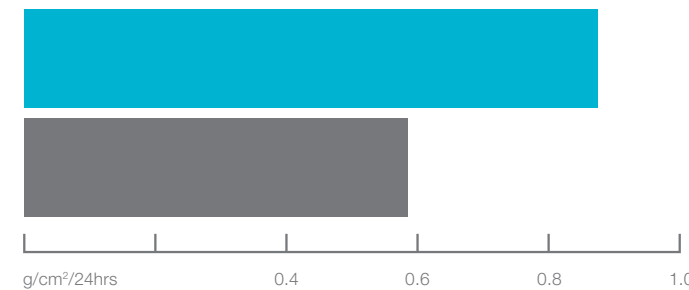


Absorption
When absorbing exudate, Biatain foam swells to conform with the wound for intimate wound contact, resulting in superior absorption and a moisture balance that improves the healing process.^{6,7}



Biatain – superior absorption - faster healing

67% better absorption vs. main competitors⁷



■ Biatain foam
■ Competitor foams

Biatain® Silicone Superior absorption – for general purposes

- The full contact foam conforms closely to the wound bed for superior absorption – also under compression
- Soft and flexible fit
- Silicone adhesive for easy removal with minimal damage or irritation to the skin
- 3-piece non-touch opening for safe and easy application

Usage
Biatain Silicone can be used for a wide range of exuding wounds such as leg ulcers, pressure ulcers, second-degree burns, donor sites, post-operative wounds and skin abrasions.



Biatain Silicone can be used in combination with compression therapy.

Biatain Silicone

Size (cm)	Qty	Code	NHS	PIP
7.5x7.5	10	3434	ELA425	353-3817
10x10	10	3435	ELA451	356-9811
12.5x12.5	10	3436	ELA426	353-3825
15x15	5	3437	ELA427	353-3833
17.5x17.5	5	3438	ELA428	353-3841



Biatain® Non-Adhesive Superior absorption – for wounds with extra fragile skin

- Absorbent polyurethane foam dressing with bevelled edges
- Soft and flexible
- Unique 3D foam structure that conforms closely to the wound bed for superior absorption – also under compression

Usage
Biatain Non-Adhesive can be used for a wide range of exuding wounds, including leg ulcers, pressure ulcers, diabetic foot ulcers, second-degree burns, donor sites, postoperative wounds and skin abrasions.



Biatain Non-Adhesive can be used in combination with compression therapy.

Biatain Non-Adhesive

Size (cm)	Qty	Code	NHS	PIP
5x7	10	6105	ELA414	339-6355
10x10	10	3410	ELA039	265-3228
10x20	5	3412	ELA260	315-7674
15x15	5	3413	ELA041	265-3236
20x20	5	3416	ELA047	276-2456



Biatain® Soft-Hold Superior absorption – for wounds that are difficult to bandage

- Soft and flexible absorbent polyurethane foam dressing
- Unique 3D foam structure that conforms closely to the wound bed for superior absorption – also under compression
- A gentle adherent layer covering less than 50% of the foam surface allows both hands to be free during dressing application and removal

Usage
Biatain Soft-Hold can be used for a wide range of exuding wounds, including leg ulcers, pressure ulcers, second-degree burns, post-operative wounds and skin abrasions.



Biatain Soft-Hold can be used in combination with compression therapy.

Biatain Soft-Hold

Size (cm)	Qty	Code	NHS	PIP
5x7	5	3473	ELA404	346-6059
10x10	5	3470	ELA274	320-0151
10x20	5	3472	ELA275	320-0169
15x15	5	3475	ELA276	320-0177



Biatain® Adhesive Superior absorption – for wounds that need extra adhesion

- Soft and flexible polyurethane foam dressing with hydrocolloid adhesive border
- Unique 3D foam structure that conforms closely to the wound bed for superior absorption – also under compression
- Suitable for use on healthy skin and in areas with a need for extra adhesion

Usage
Biatain Adhesive can be used for a wide range of exuding wounds, including leg ulcers, pressure ulcers, second-degree burns, donor sites, post-operative wounds and skin abrasions.



Biatain Adhesive can be used in combination with compression therapy.

Biatain Adhesive

Size (cm)	Qty	Code	NHS	PIP
7.5x7.5	10	3462	ELA634	379-3965
10x10	10	3430	ELA074	285-7027
12.5 x 12.5	10	3420	ELA044	347-2040
15x15	5	3421	ELA635	379-3973
18 x 18	5	3423	ELA045	259-6211
18 x 28	10	3426	ELA259	315-7666
17 round contour	5	3486	ELA209	304-5721
17x17 sacral	5	3483	ELA636	379-3833
23 x 23 sacral	5	3485	ELA050	281-6684
19 x 20 heel	5	3488	ELA051	281-6692



Simple choice



Superior absorption for non-infected wounds*

Biatain Silicone – for general purposes
Biatain Non-Adhesive – for wounds with extra fragile skin
Biatain Soft-Hold – for wounds that are difficult to bandage
Biatain Adhesive – for wounds that need extra adhesion

Superior absorption for infected wounds

Biatain Ag Non-Adhesive – fragile skin with infected wounds
Biatain Ag Adhesive – for infected wounds that need extra adhesion

Superior absorption for painful wounds

Biatain Ibu Non-Adhesive – for painful wounds
Biatain Ibu Soft-Hold – for painful wounds that are difficult to bandage

* Can be used for all types of exuding wounds.